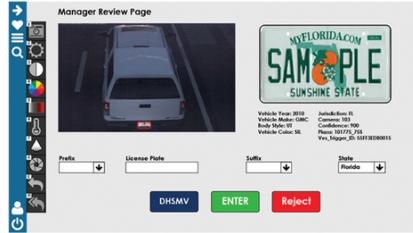




Emergency Mobile Messaging & Alerting System



Alerts and alert events are defined using EMMA's management software. Alerts such as toll violations, missing persons and others are triggered automatically through the integration with agency intelligent transportation systems and back office.

EMMA™ works by utilizing multiple data collection events and using them to create alerts that are broadcasted to user devices across multiple platforms. These events can be triggered from license plate capture, street cameras and more.



EMMA™ integrates with your existing infrastructure. Using a centralized cloud platform, EMMA™ can be accessed and managed from anywhere with a web browser or the native application. It allows you to securely log in, receive and create alerts.



Alerts can be received through the application, email or SMS!



EMMA™ is useful for emergency and incident alerts for toll management, large events, and schools!



For more information

www.AceApplications.com | (877) 499-Ace1 (2231) | info@AceApplications.com